

Místo, datum:
Praha, 14. 7. 2020



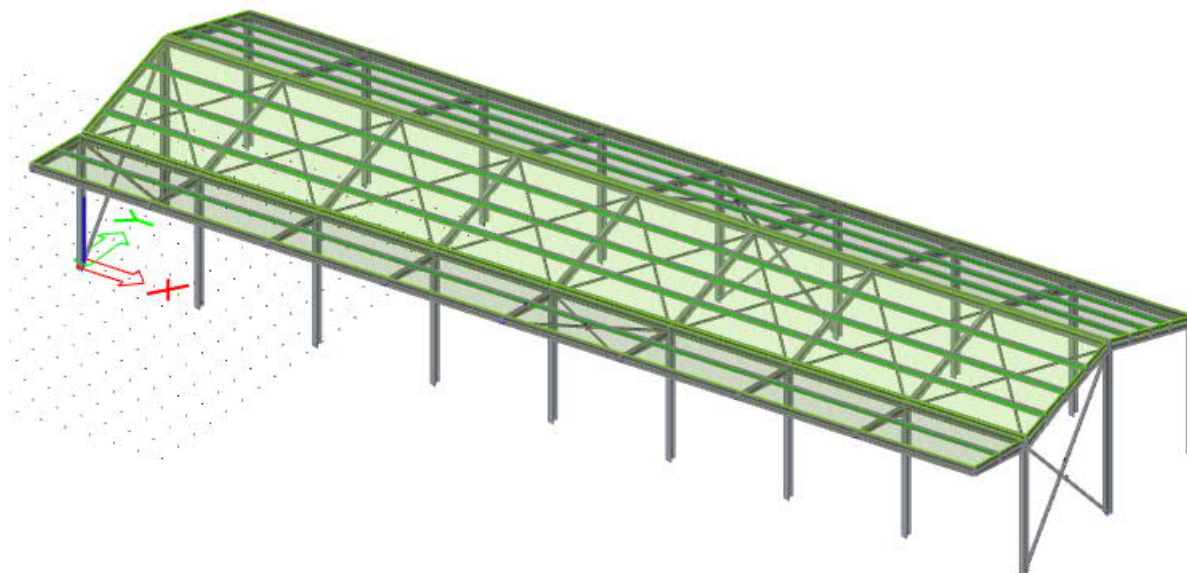
Stavba: Garážová stání, Pražská 917, Sušice

Vypracoval: Ing. Kovář Karel

Kontroloval: Ing. Tomáš Turský

Výpis materiálů (SO.01)

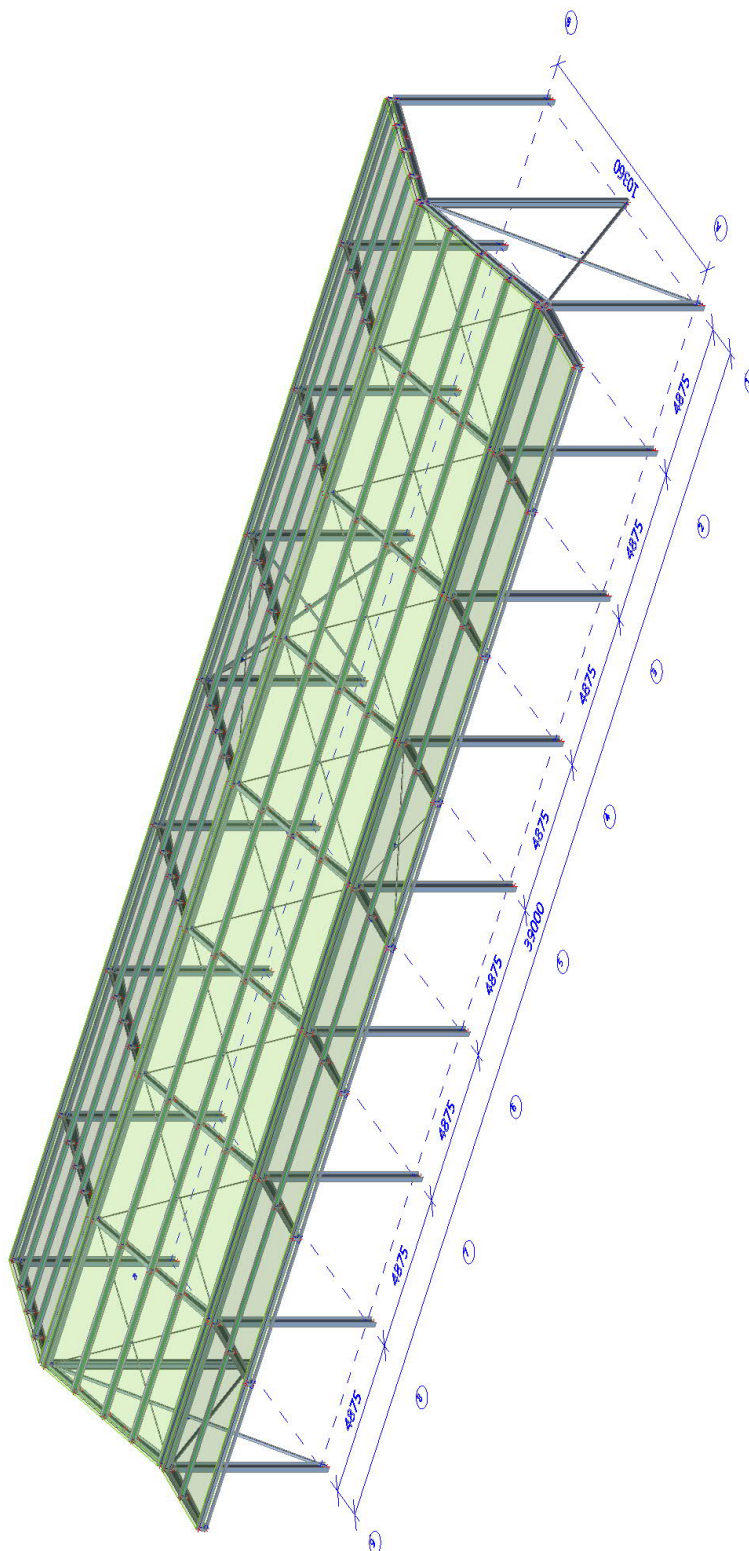
Tendrová dokumentace



Kancelář / Office:
Ruukki Building Systems, s.r.o.
Pekařská 695/10a
CZ-155 00, Praha 5
<https://www.ruukki.com/building-systems>

Fakturační adresa / Invoicing Address:
Ruukki Building Systems, s.r.o.
Pekařská 695/10a
CZ-155 00, Praha 5
CZ08130671

Model konstrukce



Výkaz hmotnosti - ocelová konstrukce

Selection: Named selection - Ocel

Type of sorting: Cross-section

Summary

Material	Mass [kg]	Surface [m ²]	Volume [m ³]
Steel	10570,5	310,617	1,3466e+00
Total	10570,5	310,617	1,3466e+00

Note: Value 'Surface' represents for 1D members the total exposed surface area, while for 2D members it corresponds only to the surface area of the centroidal plane.

Steel (1D)

Cross-section	Material	Length [m]	Unit mass [kg/m]	Mass [kg]	Surface [m ²]	Volume [m ³]
S1 - IPE300	S 235	90,360	42,2	3816,2	104,811	4,8614e-01
Př1 - IPE240	S 235	47,270	30,7	1450,9	43,570	1,8483e-01
ZT1 - RD24	S 355	142,225	3,5	504,8	10,695	6,4308e-02
S2 - IPE270	S 235	12,920	36,0	465,5	13,449	5,9303e-02
K1 - Iw (290; 6; 135; 10; 270; 0) - Parametric	S 235	28,193	30,8	867,8	27,488	1,1054e-01
Př2 - Iw (350; 6; 150; 12; 326; 0) - Parametric	S 235	4,000	37,6	150,3	4,354	1,9146e-02
Př2 - Iw (350; 6; 150; 12; 326; 0) - Parametric	S 235	28,000	38,5	1077,1	31,542	1,3721e-01
ST1 - CFRHS90X90X4	S 355	117,000	10,5	1226,1	40,482	1,5620e-01
ST2 - CFRHS60X60X4	S 235	39,000	6,7	261,8	8,814	3,3345e-02
ZT2 - CFRHS70X70X4	S 235	44,983	8,0	358,4	11,965	4,5657e-02
Př3 - IPE200	S 235	17,506	22,4	391,6	13,446	4,9891e-02
Total		571,456		10570,5	310,617	1,3466e+00

Výkaz hmotnosti - tenkostěnné vaznice

Selection: All

Filter: Layer = Vaznice

Type of sorting: Cross-section

Summary

Material	Mass [kg]	Surface [m ²]	Volume [m ³]
Steel	3058,4	333,961	3,8960e-01
Total	3058,4	333,961	3,8960e-01

Note: Value 'Surface' represents for 1D members the total exposed surface area, while for 2D members it corresponds only to the surface area of the centroidal plane.

Steel (1D)

Cross-section	Material	Length [m]	Unit mass [kg/m]	Mass [kg]	Surface [m ²]	Volume [m ³]
172Z 25 - General cross-section	S390GD+Z	126,750	6,4	813,4	83,528	1,0362e-01
172Z 23 - General cross-section	S390GD+Z	380,250	5,9	2245,0	250,433	2,8599e-01
Total		507,000		3058,4	333,961	3,8960e-01

Celková hmotnost

Ocelová konstrukce: 10570,5 x 1,15 (přípoje) = 12156,1 kg

Tenkostěnné vaznice: 3058,4 x 1,25 (přesahy + přípoje) = 3823,0 kg

Celkem: 15979,1 kg